

FAQs

1 Who can vote at the special polling station in nursing homes?

Only voters whose names are in the Registers of Electors and are residents of the nursing homes can vote there. These voters will receive their poll cards at the residential address registered with the Immigration & Checkpoints Authority.

2 Can the nursing home staff help the voter to mark his vote?

No. If the voter is physically unable to mark the ballot paper, he can request for an election official to help him.

3 Are visitors allowed on Polling Day?

Please approach the nursing home staff to find out about the visiting arrangements on Polling Day.

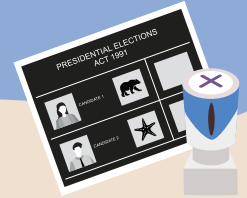
4 Can the next-of-kin bring the voter out to vote at his allotted polling station?

We encourage voters to vote at the nursing home if the nursing home is participating in the pilot.

5 Can the voter vote if he does not have his poll card with him?

The voter can approach the election official for assistance if he does not have his poll card with him.

Voting at Nursing Homes for Presidential Election 2023



The Elections Department will set up special polling stations at selected nursing homes so that voters residing in these nursing homes can vote there. This improves voting accessibility for them.



Follow ELD on Telegram for the latest info.



www.eld.gov.sg

1800-CALL-ELD (1800-225-5353)

11 Novena Rise Singapore 307516



VOTING AT THE SPECIAL POLLING STATION INSIDE THE NURSING HOME

GETTING READY FOR REGISTRATION

1

Get ready original or digital NRIC or valid passport and poll card or ePoll card.



Election Official

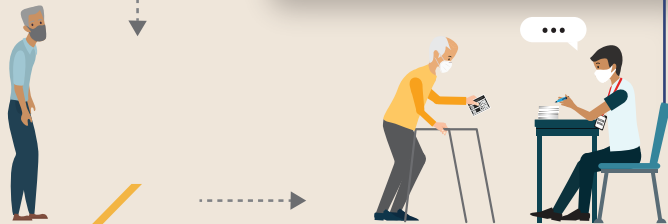
Election Official

Polling Agents

ISSUANCE OF BALLOT PAPER

2

Collect ballot paper from election official after he calls out your electoral division, polling district code, serial number and name.



Election Official

DROP YOUR VOTE IN BALLOT BOX

4

Fold and drop ballot paper into ballot box.



Election Official

VOTING

3

Mark the ballot paper using the X-stamp.



Important Note

Voters without the original or digital NRIC or valid passport will not be able to vote.



Polling Agents

MOBILE POLLING

For voters who are unable to vote at the on-site polling station

GETTING READY FOR REGISTRATION

1

Polling at Presidential Election 2023



Election official administers voting process for voter at his bed.

REGISTRATION

2

May I have your NRIC and poll card for verification, please?



Voter hands over original or digital NRIC or valid passport and poll card to election official.

3



Election official verifies voter's identification and registers the voter.

ISSUANCE OF BALLOT PAPER

4

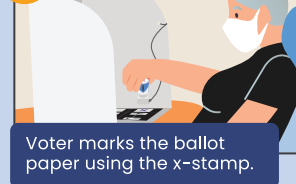
Bukit Batok, BK-JR99
Serial number 1655, Isay Tan



Election official issues the ballot paper and calls out the voter's electoral division, polling district code, serial number and name.

VOTING

5



Voter marks the ballot paper using the x-stamp.

6



Voter folds and drops the ballot paper into the ballot box.